



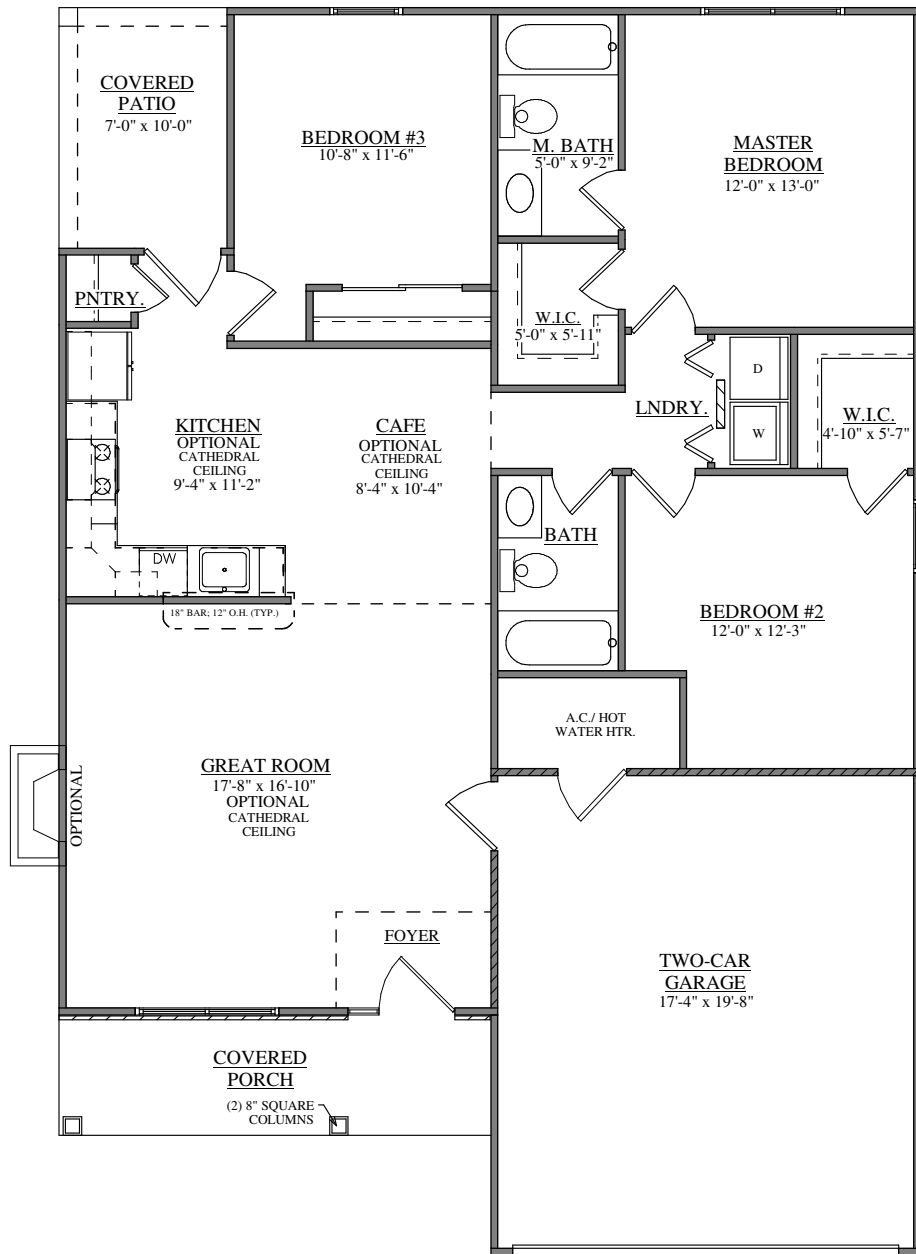
FRONT ELEVATION

FORINO - VIRGINIA I (SLAB) - CLASSIC
1260 SQ. FT.



FRONT ELEVATION

FORINO - VIRGINIA I (SLAB) - CLASSIC
W/ HALF STONE COLUMNS OPTION
1260 SQ. FT.



FIRST FLOOR PLAN
FORINO - VIRGINIA I (SLAB) - CLASSIC