



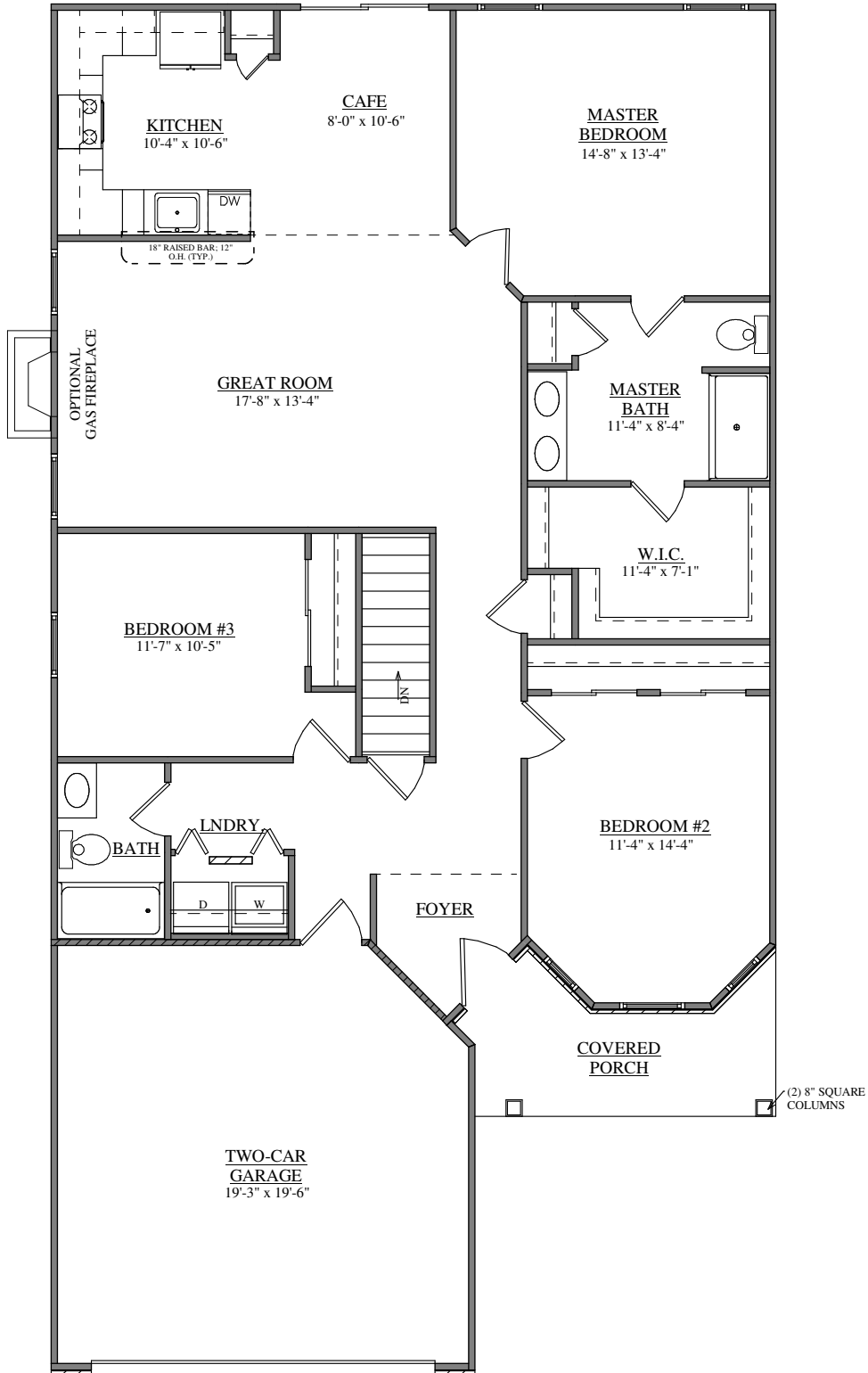
FRONT ELEVATIONS

FORINO - WILLIAMSBURG II (W/ BASEMENT) - CLASSIC
1530 SQ.FT.



FRONT ELEVATIONS

FORINO - WILLIAMSBURG II (W/ BASEMENT) - CLASSIC
W/ 1/2 STONE COLUMNS OPTION
1530 SQ.FT.



FIRST FLOOR PLAN
FORINO - WILLIAMSBURG II
(W/ BASEMENT) -CLASSIC