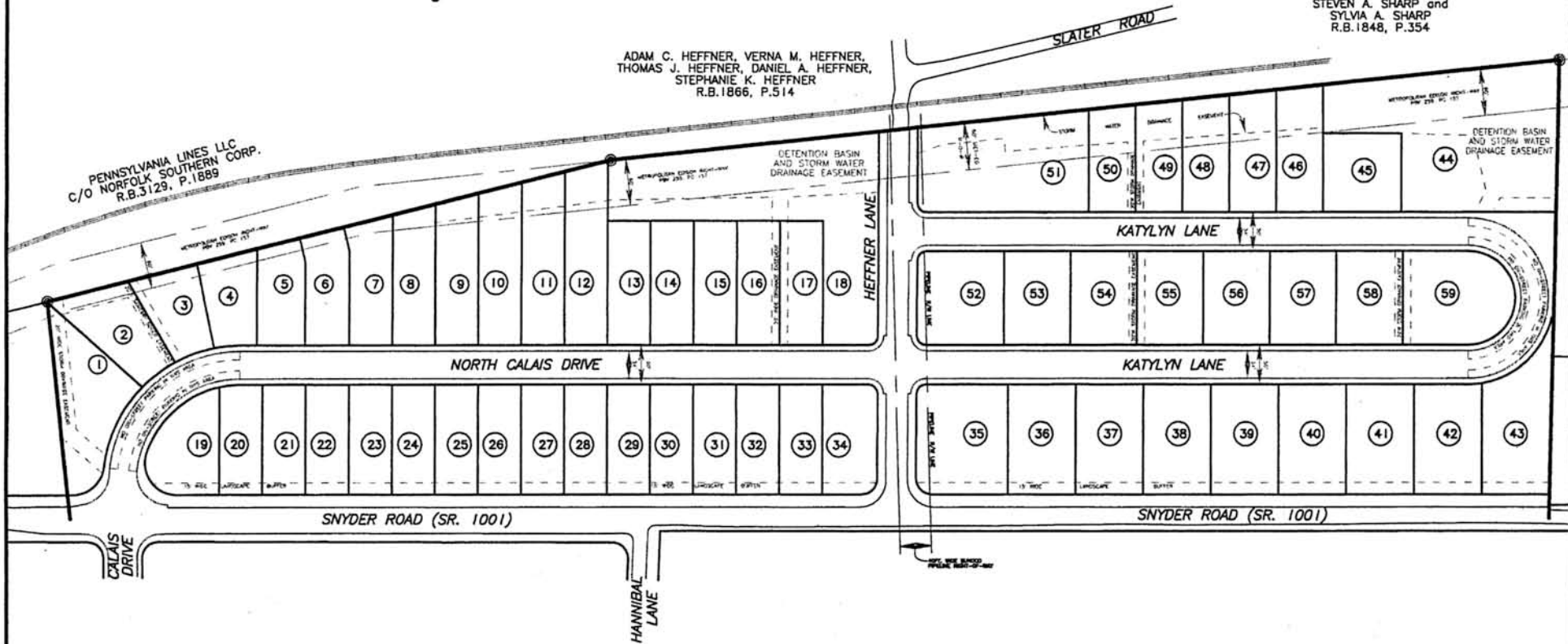




ADAM C. HEFFNER, VERNA M. HEFFNER,  
 THOMAS J. HEFFNER, DANIEL A. HEFFNER,  
 STEPHANIE K. HEFFNER  
 R.B.1866, P.514

STEVEN A. SHARP and  
 SYLVIA A. SHARP  
 R.B.1848, P.354

PENNSYLVANIA LINES LLC  
 C/O NORFOLK SOUTHERN CORP.  
 R.B.3129, P.1889



# "WILLOW GLEN NORTH"

ONTELAUNEE TOWNSHIP  
 BERKS COUNTY, PA