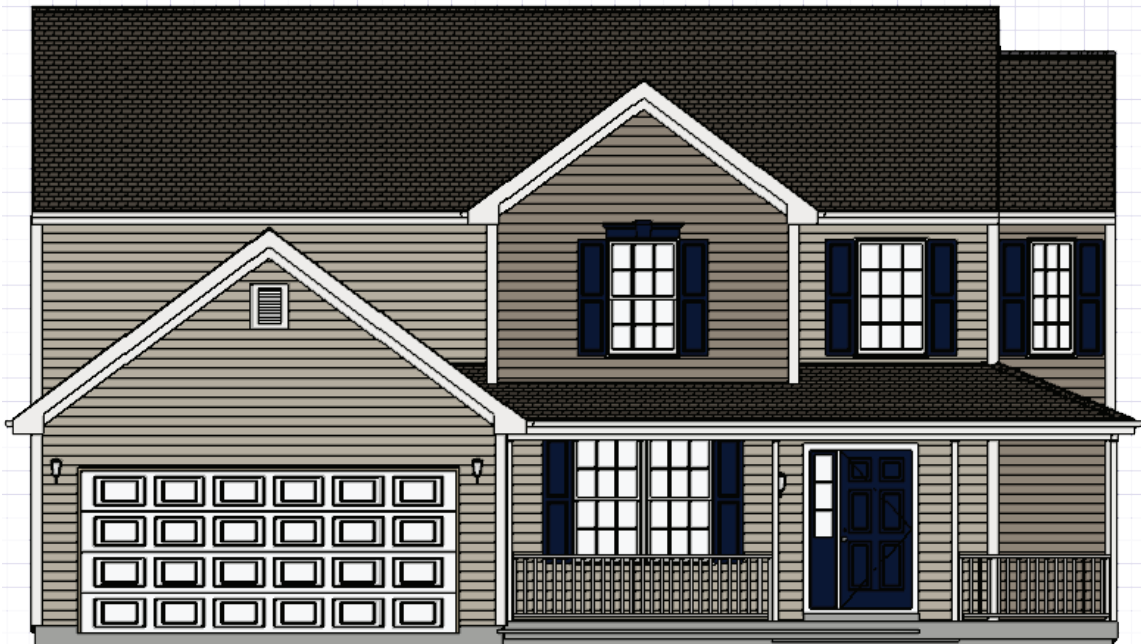


BUILDING CONFIDENCE. DELIVERING VALUE.

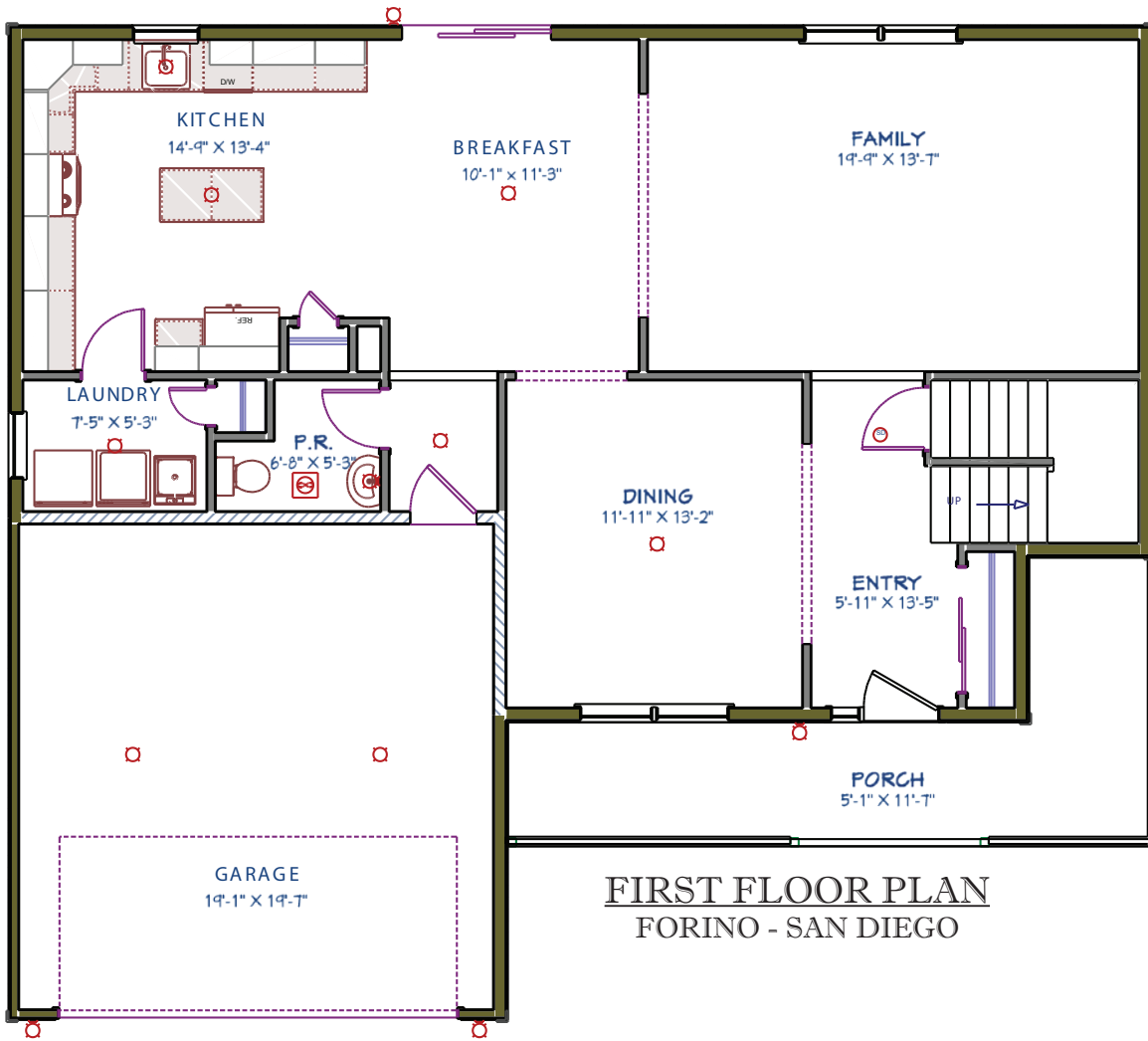


FRONT ELEVATION
FORINO - SAN DIEGO - TRADITIONAL
8' FIRST FLOOR WALL HEIGHT
2,232 SQ. FT.

Elevations and landscaping are artist conceptions only. Blueprints and contracts take precedence over artwork. Room sizes are approximate and subject to field variations.

FOR ADDITIONAL INFORMATION VISIT:
WWW.FORINO.COM

REVISED 2/24/2020



FIRST FLOOR PLAN
FORINO - SAN DIEGO

SECOND FLOOR PLAN
FORINO - SAN DIEGO

